



Mid Parker Canyon

24 months of data

Months with no Wildlife Data: October and November 2017, and November 2018

12875 wildlife images, 79 human images, 12954 images total

846 Wildlife Detections

Number of Detections: Number of wildlife photos of that species that are more than 30 minutes apart.

We cannot analyze the data just on the number of photos the camera takes. One individual animal can stand in front of a camera and take hundreds of photos, thus skewing the data. So, to help alleviate this bias, three-burst photos were narrowed down to one. Then multiple photos of the same species take within 30 minutes of each were removed to have one photo of that species in that time frame. Additionally, humans were removed so we can focus on the wildlife activity.

Table 1 The number of detections by species. Small birds that can't be easily identified, such as songbirds have been classified as 'bird'. The most common species were cattle, white-tailed deer, and raccoons.

Species	Number of Detections
bobcat	4
black bear	4
coyote	28
white-nosed coati	31
gray fox	4
javelina	27
bird	3
cooper's hawk	1
cow	397
dog	13
great blue heron	3
hooded skunk	1
insect	2
raccoon	121
raven	1
striped skunk	1
turkey	20
white-tailed deer	185





Species Accumulation Curve

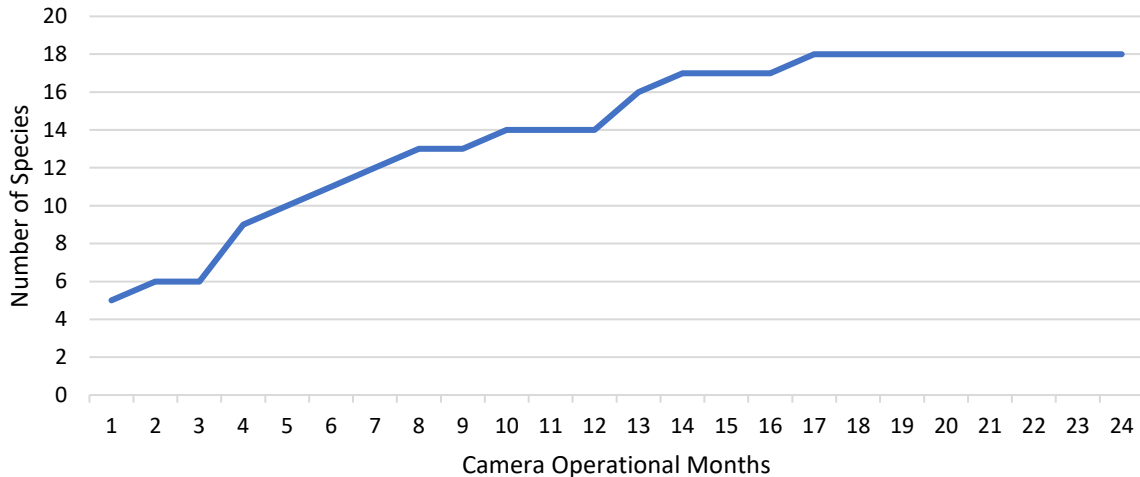


Figure 1 **Species Accumulation Curve for Mid Parker Canyon.** The wildlife camera collected data for 24 months starting in July 2017. The number of new species detected each month gradually rose until it levels out after 17 months of operation totaling 18 species detected on the camera.

Total Detections for all species Including and Excluding cattle

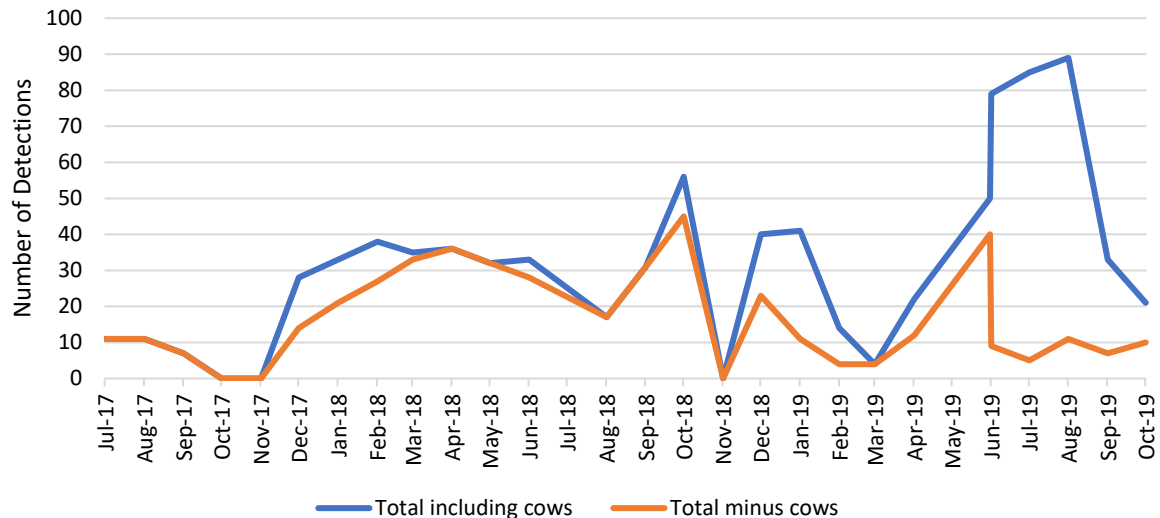


Figure 2 **Total Detections over time.** This graph shows the total number of detections of all species combined over time. The blue line includes cattle detections in the totals, and the orange line excludes cattle detections from the total. The number of cattle can skew the data as seen in the difference in the two lines from June to Sept 2019.

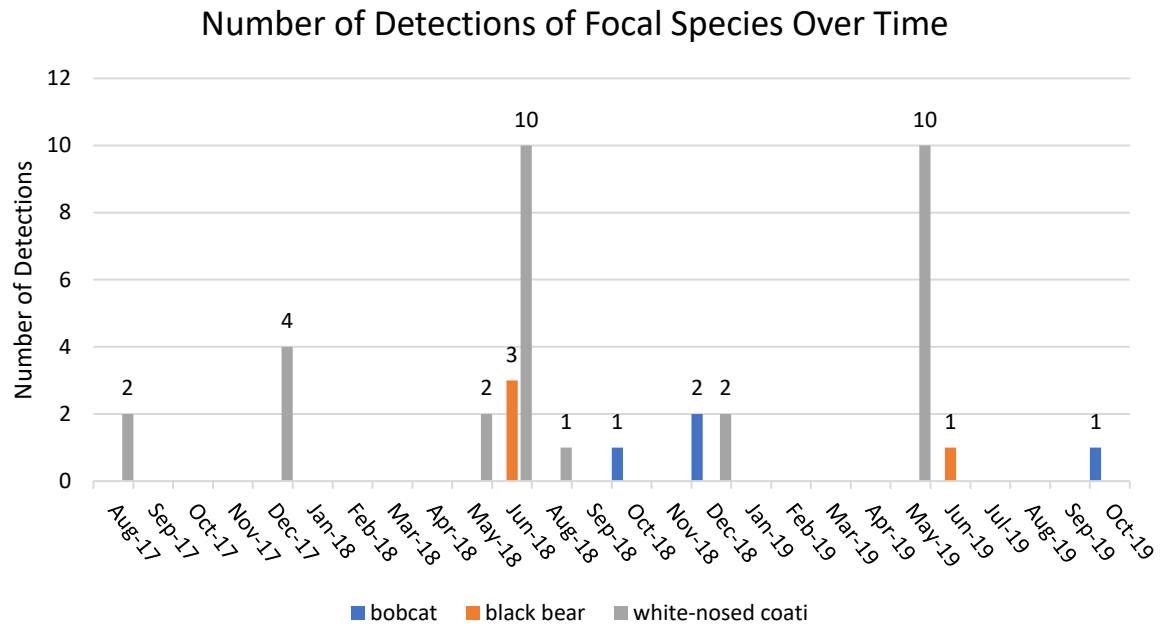


Figure 3 Number of Detections for each focal species found on this camera. White-nosed coati was the most common, with peaks in the summers. Black bears were only detected in the summer months as well. Bobcats were not detected until October 2018 and is an infrequent visitor to the camera.

